



# OUR SERVICE OFFERINGS



***Broock***  
INDUSTRIAL SERVICES

WHEN ***RESULTS*** MATTER

# WHO IS BROCK INDUSTRIAL



Brock Industrial is a premier union services company providing specialty craft and maintenance services to key industries across the U.S. We are dedicated to offering the safest and highest quality service and solutions to our customers. We embrace our union heritage and view ourselves as partners with our customers, our members and the communities in which we operate.

The Brock Group, parent company of Brock Industrial Services, was founded in 1947. From its humble beginnings as a small painting company from Beaumont, Texas, the company has grown into a \$1.6B company with over 12,000 employees. The phenomenal growth can be attributed to the hardworking / talented people, a foundation built on safety, and key strategic acquisitions which expanded the capabilities and services' portfolio to where we are today. Primarily focused on performing Routine Maintenance, Turnarounds and Capital Construction projects for the Industrial and Commercial markets, our services offered range from general mechanical that include civil, structural, mechanical, piping, electrical, instrumentation and project / program management, as well as soft-crafts that include scaffolding, insulation, coatings / linings / blasting, abatement, fireproofing, rope access, facilities maintenance, refractory, and roofing. However, as a service to our customers if there are added needs that fall outside of our core services, Brock will support the customer in finding solutions.

Safety is essential to everything we do at Brock. As such, we are dedicated to offering the safest and highest quality service and solutions, having one of the best TRIR's in

the industry. We view ourselves as partners with our customers, our employees, and the communities in which we operate. Our performance-driven culture is led by having and developing the best people, the most efficient processes, and the right tools for the job. Focused on delivering results, we incorporate innovative technology & seek to deliver continuous improvement in the services that we provide to our customers.

When you partner with Brock Industrial, you get a partner that has a Corporate Vision of being the best in safely building & sustaining the world's critical infrastructure with a relentless commitment to partnership and innovation and a Value Proposition built on 5 key principles:

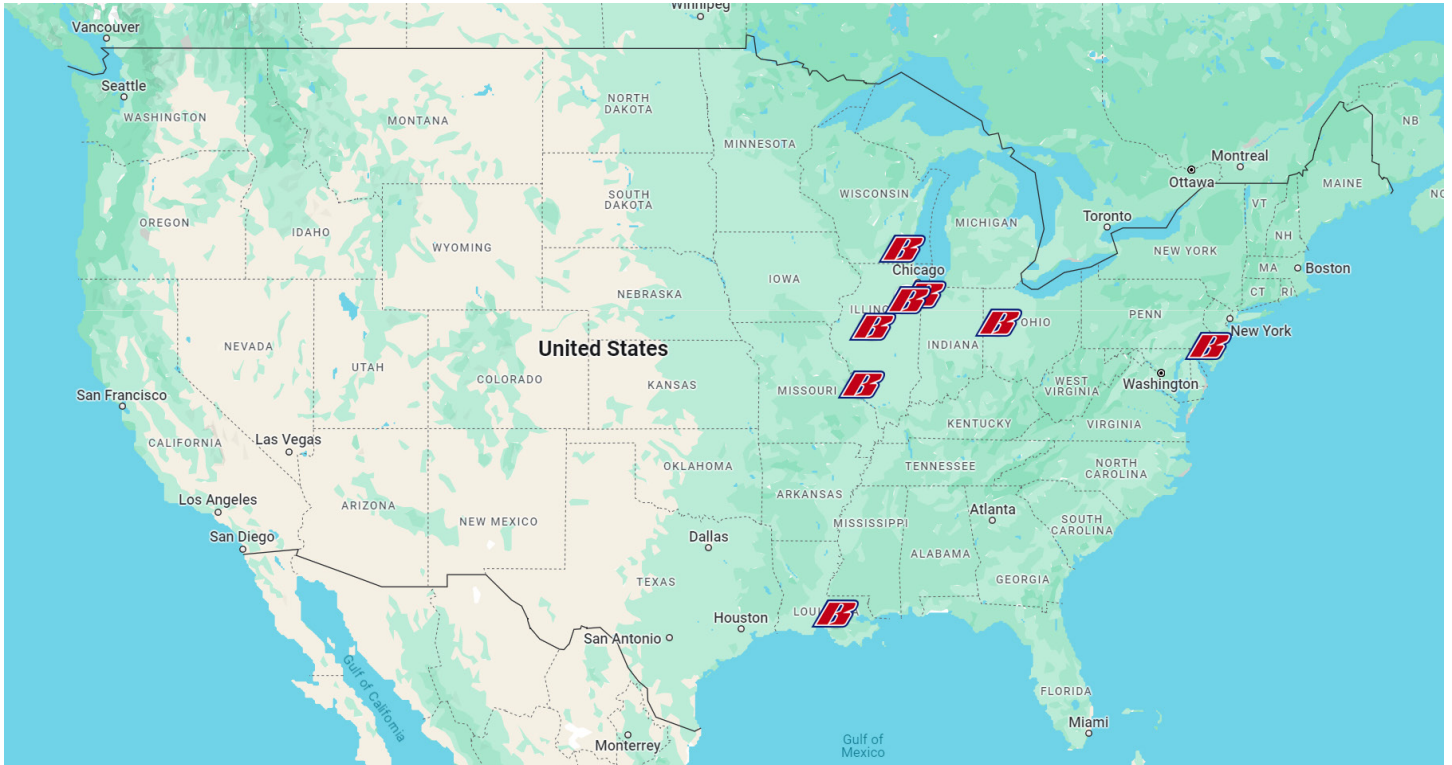
- B Safe** - We start and end with safety & we take it to heart
- B Pure** - We do not compromise on integrity
- B Best** - We are obsessed with continuous improvement & winning
- B New** - We will lead the market in innovations
- B One** - We are all part of one Brock family

We have refined our skills, processes and programs over our 75+ year history. Our success is attributed to the longstanding relationships with our customers and our willingness to seek mutually beneficial solutions. Probably most importantly, our BSafe culture is a major differentiator for us – our entire organization; from the C-Suite to the field has embraced our guiding safety principles and we take them to heart everyday which has allowed us to consistently have one of the best safety records in our industry.

Over 75 Years  
Industry  
Experience



**PROUD UNION LABOR ORGANIZATION**



**JOLIET, IL**  
2210 Oak Leaf St.  
Joliet, Illinois 60436  
(815) 730-3350

**PEKIN, IL**  
309 Mechanic St.  
Pekin, Illinois 61555  
(309) 353-6145

**SAUGET, IL**  
1 Riverview Ave.  
Sauget, Illinois 62201  
(618) 646-9397

**LIMA, OH**  
1776 Buckeye Rd.  
Lima, Ohio 45804  
(567) 287-4229

**CHERRY HILL, NJ**  
597 Deer Rd.  
Cherry Hill, New Jersey 08034  
(856) 565-2200

**HARTLAND, WI**  
712 Rose Dr.  
Hartland, Wisconsin 53029  
(815) 641-4951

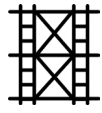
**PORT ALLEN, LA**  
950 Mahaffey Rd.  
Port Allen, Louisiana 70767  
(225) 387-2871

**EAST CHICAGO, IN (Paint Shop)**  
425 West 151st St.  
East Chicago, IN 46312  
(815) 320-3608

# TABLE OF CONTENTS

5

**SCAFFOLDING**



6

**INSULATION**



7

**ABATEMENT**



8

**COATINGS  
ON-SITE**



9

**COATINGS  
SHOP-BASED**



10

**REFRACTORY**



11

**FIREPROOFING**



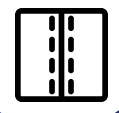
12

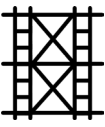
**METAL  
FABRICATION**



13

**BLANKET  
FABRICATION**





**WHEN RESULTS MATTER**

## THE BROCK ADVANTAGE

- Union Soft-Craft Services Contractor
- 75+ Years in Business
- Best-In-Class Safety Record
- Experienced Maintenance, Capital, and Turnaround service provider
- Offering Coast-to-Coast Coverage
- Proven History of Delivering Results

## SERVICE OVERVIEW

With nearly 17 million pieces of scaffold inventory and multiple scaffold yards strategically located to mitigate schedule risks, Brock brings the material, expertise, and management tools together to promote efficient work access. Brock has significant experience with effective scaffold engineering, OSHA compliance, design, erection and dismantle of scaffolding systems.



## PROJECT TYPES

### CAPITAL PROJECTS:

Driven by our commitment to excellence in project execution, Brock is a leader in providing specialty craft services, labor support, and materials for new construction. Our history of successful project performance is based on our solutions-oriented approach - ensuring quality performance, cost efficiency, and consistent service delivery.

### SKILLED UNION CRAFT MAINTENANCE:

By focusing on long-term maintenance objectives, Brock is a trusted and valued partner to customers seeking to improve the reliability asset protection and efficiency of their facilities. Our process-driven approach increases operational efficiencies and provides the platform for repeatability, dependability, and continuous cost reduction. Robust capabilities allow us to analyze long-term performance across multiple sites and drive continuous improvement.

### TURNAROUNDS:

Brock's ability to support schedule-driven turnaround activities has developed from a long history of effective maintenance support at some of the largest and most complex oil, gas, and chemical facilities. By leveraging our knowledge of how facilities operate and significant equipment resources, we are able to quickly scale our on-site presence to meet tight deadlines during a facility turnaround.

## SCAFFOLD MANAGEMENT SYSTEM (SMS)

Brock's Scaffold Management System (SMS) provides a time- and cost-effective way to promote overall efficiency improvements and inventory adjustments by accurately controlling piece count and scaffold aging, while also monitoring scaffolding installations, revisions, and dismantling schedules.

## A SAMPLING OF OUR CUSTOMERS





**WHEN RESULTS MATTER**

**THE BROCK ADVANTAGE**

- Union Soft-Craft Services Contractor
- 75+ Years in Business
- Best-In-Class Safety Record
- Experienced Maintenance, Capital, and Turnaround service provider
- Offering Coast-to-Coast Coverage
- Proven History of Delivering Results

**SERVICE OVERVIEW**

Brock Industrial's insulation expertise helps facilities operate at maximum efficiency while reducing risks and costly repairs. Our capabilities include installation in support of large-scale capital construction projects, energy efficiency studies, maintenance and repair. Brock's expertise encompasses insulation materials that meet the design for specific processes such as heat conservation, cryogenic, personnel protection (burn and hearing), and condensation control. Brock insulators have successfully installed Calcium Silicate, Expanded Perlite, Mineral Wool, Fiberglass, Cellular Glass, Poly Foams and Silica Aerogel to meet client specifications. We also have the experience in installing all varieties of protective coverings for weather protection or retarding vapor transmission.

**INSULATION SOLUTIONS**

Brock's services are based on innovative, process-driven management programs that collectively maximize the effectiveness of bundled services, as well as benchmarking capabilities that analyze performance across multiple sites, driving continuous improvement.

- Process Temperature Stability Control
- Energy Conservation (BTUs)
- Personal Protection (Burns, Slips)
- Freeze Protection
- Condensation Control (Mold, Mildew)
- Corrosion Under Insulation Prevention
- Asbestos Liability Management
- Emissions Control (Air Pollution)



**THE LEADING FABRICATOR & INSTALLER OF INSULATION SYSTEMS**

Brock has extensive experience in the design, fabrication and installation of removal, reusable insulation covers. Our craftsmen can measure and fabricate removeable covers for quick, cost effective insulation solutions on site in the field as part of routine maintenance activity, as well as in shop environments to support larger scale projects. We engineer and manufacture the best, reusable and removable industrial blankets and covers for:

- Chilled Water & Cryogenic Applications
- Heat Exchangers & Header Covers
- Steam & Gas Turbines
- Valves & Pump Covers

**A SAMPLING OF OUR CUSTOMERS**





**WHEN RESULTS MATTER**

### THE BROCK ADVANTAGE

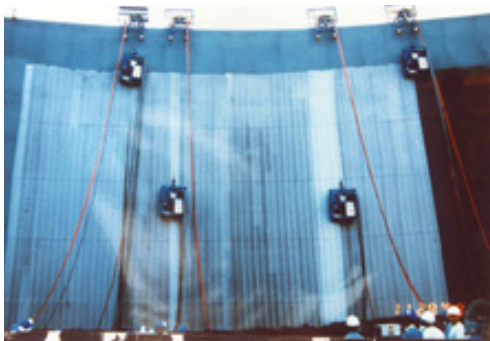
- Union Soft-Craft Services Contractor
- 50+ years performing Lead & Asbestos Abatement
- Utilize state of the art equipment
- Brock EPA-approved Abatement Training Program
- Stringent quality and regulatory compliance
- Certified Abatement Technicians
- Best-In-Class Safety Record
- Competitively Priced

### SERVICE OVERVIEW

For over 50 years, Brock has been providing abatement services to the heavy industrial segment. This focus has enabled us to become the true specialist in providing safe and effective Lead & Asbestos removal that is 100% compliant with Federal and State regulations. Our certified technicians work with the latest methods and technologies to ensure safe removal, government compliance, and risk reduction.

### ABATEMENT EXPERTS

We maintain a highly-skilled union team of certified professionals with years of experience in performing Lead and/or Asbestos removal from a magnitude of projects ranging from major petrochemical explosions, industrial facility turnarounds, and decommissioning/cleanup projects. Brock's extensive experience in dealing with the demolition of Chemical, Refining, and Power Plants enables us to guide our customers through all phases of the demolition project to best manage the cost, risk, and down-time.

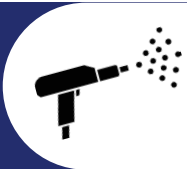


### UTILIZING TECHNOLOGY TO DRIVE RESULTS

Brock has turned to technology to better serve our customers. some examples are:

- Robotics
- X-Ray Fluorescent Instruments
- Negative Air Containment
- HEPA-Vacuum attached to power tools
- State of the art Lead assessment testing tools





**THE BROCK ADVANTAGE**

- 75+ year history in performing exceptional surface preparation and coatings applications
- One of the largest Industrial Protective Coatings contractors in North America
- We hold QP-1 & QP-2 certifications from SSPC
- NACE II & NACE III Coatings Inspectors on staff with 60+ years of experience
- Attention to Detail
- Competitively Priced

**SERVICE OVERVIEW**

With over 75 years of delivering high-quality Coatings and surface preparation services across North America, Brock is a leader in the development and management of industrial coatings solutions, combines technical expertise with practical skills, providing high-quality surface preparation and coatings for tanks.

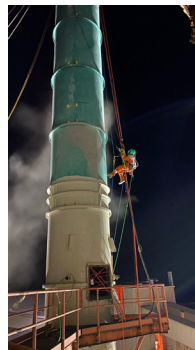
**SURFACE PREPARATION**

**LININGS**

- Traditional
- Induction Stripping on Glass Epoxy Systems
- Ultrahigh Pressure Water Jetting
- Automated Surface Preparation

**EXTERIORS**

- Water Jetting / Blasting
- Abrasive / Automated Machine Blasting
- Hand and Power Tool Cleaning
- Pressure Washing



**APPLICATION METHODS**

**INTERIORS**

- Airless Spray
- Plural Component Spray
- Trowel
- Glass Choppers

**EXTERIORS**

- Brush and Roll
- Conventional Spray
- Airless Spray
- Thermal Spray



**Experienced and Skilled with:**

**COATINGS EQUIPMENT**

- Conventional / Airless Spray
- Standard Abrasive Blasting Rigs
- Plural Component Spray
- Ultra High-Pressure Jetting
- Water Abrasive Blasting
- Bristle Blasters
- Power Tools
- Rope Access for Surface Prep And Coatings



**COATINGS & LININGS**

- Traditional Industrial Coatings
  - Zinc
  - Epoxy
  - Urethanes
- Thermal Spray Aluminum (TSA) Coatings
- High-Temperature Coatings
- Tank & Vessel Linings







**WHEN RESULTS MATTER**

**THE BROCK ADVANTAGE**

- 75+ year history in performing exceptional surface preparation and coatings applications
- One of the largest Industrial Protective Coatings contractors in North America
- We hold QP-1 & QP-2 certifications from SSPC
- NACE II & NACE III Coatings Inspectors on staff with 60+ years of experience
- Attention to Detail
- Competitively Priced

**SERVICE OVERVIEW**

Brock has offsite painting and blasting facilities strategically located throughout the US and Canada. Our blasting and painting teams highly experienced, hold industry certifications, are innovative, reliable and driven to meet critical deadlines.

**GENERAL CAPABILITIES**

**COATING & PAINTING SERVICES**

- Atmospheric & Containment
- Linings & Immersion
- Surface Preparation
- Industrial-Quality Paint
- Thermal Spray Coating

**COATINGS PROGRAMS**

- Asset Management
- Surveys
- Coating Optimization
- Corrosion Management

**GENERAL SHOP DETAILS** *(details vary per location)*

- 23,500 sq/ft building
- 4 traveling cranes capable of lifting 10 tons overhead
- NACE, SSPC, MTO, Project Management personnel
- QP-1, QP-2, and QP-3 certified contractor
- 2 high power Atlas Copco 395 HP Electric Compressors
- 24/7 capabilities to support critical needs
- Blast booth dimensions: 11' 6" (w) x 11' 3" (h) x 50' (l)
- Paint booth dimensions: 11' 6" (w) x 11' 3" (h) x 50' (l)



**Brock Coatings & Blasting Facilities**

425 West 151st  
East Chicago, IN 46312  
(815) 320-3608

2550 Genoa Red Bluff Rd.  
Houston, TX 77034  
(281) 487-6353

4835 Bourque Rd.  
Nederland, TX 77627  
(409) 344-5094

3735 8th St.  
Nisku, AB, Canada T9E 8J8  
(780) 851-7107





**WHEN RESULTS MATTER**

**THE BROCK ADVANTAGE**

- Union Soft-Craft Services Contractor
- 75+ Years in Business
- Best-In-Class Safety Record
- Experienced Maintenance, Capital, and Turnaround service provider
- Offering Coast-to-Coast Coverage
- Proven History of Delivering Results

**SERVICE OVERVIEW**

Refractory Services are a part of the comprehensive services portfolio offered by Brock Industrial. The services are performed by our highly skilled Union technicians that have in excess of 20 years experience servicing all forms of Refractories.

**REFRACTORY SERVICE SOLUTIONS**

- Boilers
- Furnaces
- Heaters
- Kilns
- Reformers
- Steam Generators

**SERVICES INCLUDE**

- Form Fabrication
- Pour Tiles
- Perform Dry Outs In-House
- Install Linings and Seals

**BEFORE & AFTER**



**LININGS & SEALS EXPERIENCE**

- |                                |                            |                             |                          |
|--------------------------------|----------------------------|-----------------------------|--------------------------|
| ▪ Interruptable Foldback (IFB) | ▪ Mono Block Wall Repairs  | ▪ Brick & Castable Floors   | ▪ Ceramic Fiber Blankets |
| ▪ Burner Tiles                 | ▪ Tube Seals               | ▪ Ceramic Tiles             | ▪ Brick Lining           |
| ▪ Bridge Wall Repairs          | ▪ Vacuum Formed Peep Sites | ▪ Wet Gunning Between Tubes |                          |





**WHEN RESULTS MATTER**

**THE BROCK ADVANTAGE**

- Union Soft-Craft Services Contractor
- 75+ Years in Business
- Best-In-Class Safety Record
- Experienced Maintenance, Capital, and Turnaround service provider
- Offering Coast-to-Coast Coverage
- Proven History of Delivering Results

**SERVICE OVERVIEW**

Brock is a full-service provider of fire protection products for maintenance, capital and turnaround projects for a diverse group of industries that include Petrochemical, Refining, Power Generation, Offshore, LNG, and Pipelines. This diversity allows Brock to offer best practices in industry to each customer. Brock has experience and expertise with intumescent, cementitious, and sand/cement fireproofing materials, as well as fire protection blankets and high temperature insulation block. All fire protection products are applied or installed either in one of our strategically located shop facilities, or on-site wherever the project is set. Brock provides these high-performance passive fire protection (PFP) systems as specified and tailored to fit any specific project requirement.

**AN INDUSTRY LEADER IN FIREPROOFING INSTALLATIONS**

Brock's skilled union craftsmen, supervisors and knowledgeable management staff are not only experienced in complete fireproofing installations for field and shop applications, but also the field block-out work on shop applied fireproofing for capital projects. Brock's quality installations assure specified fire protection in the facility, reduced potential for Corrosion Under Fireproofing (with proper sealing and waterproofing of the fireproofing) and lowered installed and long-term cost.

Our experience includes heavy duty products such as:

- Albi-Clad™
- Pitt-Char®
- Chartek®
- Pyrocrete®
- Fendolite®
- Thermolag™
- Firetex®
- 3M Interam™
- Super Firetemp®



**A SAMPLING OF OUR CUSTOMERS**





**WHEN RESULTS MATTER**

### THE BROCK ADVANTAGE

- Union Soft-Craft Services Contractor
- 75+ Years in Business
- Best-In-Class Safety Record
- Experienced Maintenance, Capital, and Turnaround service provider
- Offering Coast-to-Coast Coverage
- Proven History of Delivering Results

### SERVICE OVERVIEW

The Brock Metal Fabrication Division has been providing quality industrial craftsmanship for more than forty years. Our capabilities include support of large-scale capital construction projects, maintenance, and repair.

### METAL FABRICATION SOLUTIONS

The Metal Fabrication Division fabricates and welds carbon steel, aluminum, stainless steel, and nickel alloys for chemical processing, power, energy, and petroleum industries.



### SERVICES INCLUDE

- Welding
- Metal Punching
- Metal Cutting/Shearing
- Metal Rolling, Forming, and Bending
- Customization/Installation



### PORT ALLEN, LA FACILITY

The Port Allen, LA Facility consists of more than 25,000 square feet of dedicated manufacturing area that houses various CNC machinery, capable of fabricating a wide variety of parts safely and efficiently.

### Equipment features include:

- High Speed CNC Metal Punch
- Plasma Cutter
- Hydraulic Press Brakes
- 10 Foot Shears
- Six Rollers

**Brandon Brown, Division Manager | Office: 225-387-2871 | Mobile: 225-413-6302**  
**950 Mahaffey Rd, Port Allen, LA 70767**





**WHEN RESULTS MATTER**

### THE BROCK ADVANTAGE

- Union Soft-Craft Services Contractor
- 75+ Years in Business
- Best-In-Class Safety Record
- Experienced Maintenance, Capital, and Turnaround service provider
- Offering Coast-to-Coast Coverage
- Proven History of Delivering Results

### SERVICE OVERVIEW

Brock Industrial Services is a leader in providing removable insulation covers for specific needs by working in a wide range of surface temperatures (as low as 50° F to as high as +2600°F) and working under various extreme environmental or technological conditions. We provide covers that are sewn in the actual shape of the equipment allowing custom-made products to fit any system. Our covers are engineered to provide complete service of thermal, acoustical, and personnel protection insulation systems.

### BLANKET FABRICATION SOLUTIONS

Our experience team of full-time engineers and fabricators can quickly and accurately produce any type of removable cover for a variety of uses, including:

- Flanges and Valves
- Piping and Welded Joints
- Strainers and Filters
- Pumps
- Heat Exchangers
- Turbines and Exhaust
- Vessels
- Exchanger Bodies and Heat



### BLANKET TAGGING SYSTEM

Brock Industrial Services offers a comprehensive tracking system for the products we manufacture to allow you access to the critical data about the custom removable thermal covers; applications, location, date of manufacture, warranty information, etc.



**Tanner McQuilkin, BIS Blanket Shop Manager | [tanner.mcquilkin@brockgroup.com](mailto:tanner.mcquilkin@brockgroup.com)  
2220 Oak Leaf St, Joliet, IL 60436**



FOR MORE INFORMATION  
[www.brockgroup.com](http://www.brockgroup.com)  
815.730.3350

